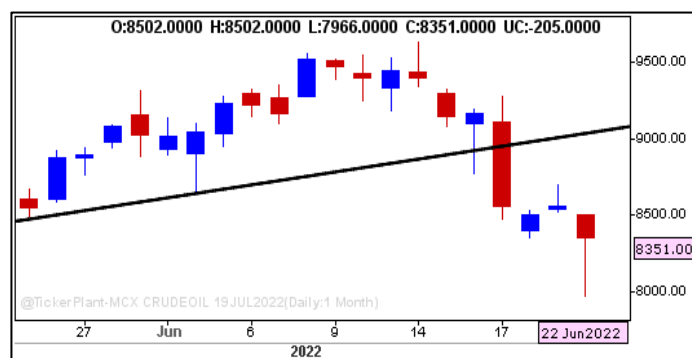


COMMODITY TECHNICAL OUTLOOK

- MCX Gold is likely to trade with sideways to positive bias during today's trading session. Support is at Rs.50600 - 50400 levels whereas resistance is at Rs.51200- 51400 levels.
- MCX Silver is likely to trade with sideways to negative bias during today's trading session. Support is at Rs.60200 - 59700 levels whereas resistance is at Rs.61200 - 62700 levels.
- MCX Crude Oil is likely to trade with negative bias during today's trading session. Support is at Rs.8300 - 8180 levels whereas resistance is at Rs. 8500 - 8620 levels.
- MCX Copper is likely to trade with negative bias during today's trading session. Support is at Rs.724 - 718 levels whereas resistance is at Rs.736 - 742 levels.

CHART OF THE DAY

MCX- CRUDE OIL (DAILY CHART)



Strategy: Intraday

- CRUDE OIL prices traded with negative bias during the last trading session; prices are trading below downward sloping trend line.
- For Intraday session immediate support is at 8300 - 8180 level and resistance at 8500 - 8620. Any pullback towards resistance level should be taken as selling opportunity targeting immediate support of 8300 - 8180 levels on lower side.

MARKET MOVEMENT

| MCX Commodities | Expiry | Open | High | Low | Close | Volume | Daily % Change | Weekly % Change | Monthly % Change | Yearly % Change |
|-----------------|-------------|--------|--------|--------|--------|--------|----------------|-----------------|------------------|-----------------|
| GOLD | 05 AUG 2022 | 50,691 | 51,146 | 50,522 | 50,921 | 6,314 | 0.32% | -0.13% | -0.46% | 8.64% |
| SILVER | 05 JUL 2022 | 61,101 | 61,101 | 60,113 | 60,698 | 13,972 | -0.94% | -1.35% | -2.06% | -10.39% |
| CRUDE OIL | 19 JUL 2022 | 8,502 | 8,502 | 7,966 | 8,392 | 58,325 | -1.92% | -8.42% | -1.41% | 54.35% |
| NATURAL GAS | 27 JUN 2022 | 530 | 542 | 515 | 538 | 37,892 | -0.17% | -7.35% | -21.16% | 111.52% |
| COPPER | 30 JUN 2022 | 740 | 740 | 726 | 730 | 10,116 | -1.66% | -2.76% | -6.56% | 1.60% |

Source: Investing.com

TECHNICAL VIEW

| MCX Commodities | S2 | S1 | PIVOT | R1 | R2 | 15 Min | Hourly | 5 Hrs. | Daily | Weekly |
|-----------------|-------|-------|--------|-------|-------|-------------|-------------|-------------|-------------|-------------|
| GOLD | 50239 | 50580 | 50,863 | 51204 | 51545 | Strong Buy | Strong Buy | Neutral | Neutral | Neutral |
| SILVER | 59649 | 60174 | 60,637 | 61162 | 61686 | Buy | Neutral | Strong Sell | Strong Sell | Strong Sell |
| CRUDE OIL | 7751 | 8071 | 8,287 | 8607 | 8928 | Strong Sell | Strong Sell | Strong Sell | Strong Sell | Strong Buy |
| NATURAL GAS | 505 | 521 | 532 | 548 | 565 | Strong Sell | Strong Sell | Strong Sell | Strong Sell | Buy |
| COPPER | 718 | 724 | 732 | 738 | 744 | Strong Sell | Strong Sell | Strong Sell | Strong Sell | Strong Sell |

Source: Investing.com

CURRENCY TECHNICAL OUTLOOK

- The USD/INR futures pair has support at 78.10 levels whereas resistance is placed at 78.50 levels. The pair is expected to trade range bound until either side level is breached.
- The EUR/INR futures pair has support at 82.30 levels whereas resistance is placed at 82.70 levels. The pair is expected to find support at lower levels and trade firm above 82.70 level up to 82.90 and 83.10 levels.
- The GBP/INR futures pair has support at 95.80 levels whereas resistance is placed at 96.20 levels. The pair is expected to find support at lower levels and trade firm above 96.20 level up to 96.40 and 96.60 levels.
- The JPY/INR futures pair has support at 57.40 levels whereas resistance is placed at 57.80 levels. The pair is expected to trade range bound until either side level is breached.

CHART OF THE DAY

EURINR (DAILY CHART)



Strategy: Intraday

- EURINR pair traded with mild positive bias and managed to close above upward sloping trending line in the last trading session
- The pair is likely to trade with positive bias and any pullback near immediate support of 82.30 level should be taken as buying opportunity targeting 82.70 – 82.90 levels on higher side
- For Intraday session, it has support at 82.30 – 82.10 levels whereas resistance is placed at 82.70 – 82.90 levels

MARKET MOVEMENT

| Currencies | Expiry | Open | High | Low | Close | Volume | Daily % Change | Weekly % Change | Monthly % Change | Yearly % Change |
|------------|-------------|---------|---------|---------|-------|-----------|----------------|-----------------|------------------|-----------------|
| USDINR | 28 JUN 2022 | 78.1 | 78.415 | 78.1 | 78.36 | 2,520,751 | 0.27% | 0.26% | 1.02% | 5.45% |
| EURINR | 28 JUN 2022 | 82.3575 | 82.58 | 81.9975 | 82.53 | 270,083 | 0.02% | 1.35% | -0.37% | -7.02% |
| GBPINR | 28 JUN 2022 | 95.7775 | 96.2125 | 95.2425 | 95.98 | 343,396 | 0.10% | 1.60% | -1.73% | -7.46% |
| JPYINR | 28 JUN 2022 | 57.5925 | 57.74 | 57.23 | 57.58 | 78,826 | 0.00% | -2.21% | -5.37% | -13.99% |

Source: Investing. com

TECHNICAL VIEW

| Currencies | S2 | S1 | PIVOT | R1 | R2 | 15 Min | Hourly | 5 Hrs. | Daily | Weekly |
|------------|-------|-------|-------|-------|-------|--------|--------|---------|---------|---------|
| USDINR | 77.98 | 78.17 | 78.29 | 78.48 | 78.68 | Buy | Buy | Buy | Neutral | Neutral |
| EURINR | 81.79 | 82.16 | 82.37 | 82.74 | 83.11 | Buy | Buy | Neutral | Neutral | Sell |
| GBPINR | 94.84 | 95.41 | 95.81 | 96.38 | 96.95 | Buy | Buy | Neutral | Neutral | Sell |
| JPYINR | 57.01 | 57.29 | 57.52 | 57.80 | 58.09 | Buy | Buy | Neutral | Neutral | Sell |

Source: Investing. com

ECONOMIC DATA

| Date/Time | Currency | Importance | Data | Forecast | Previous |
|--------------------------------|----------|------------|----------------------------|----------|----------|
| Thursday, June 23, 2022 | | | | | |
| 13:30 | EUR | *** | ECB Economic Bulletin | | |
| 14:00 | GBP | *** | Composite PMI (Jun) | 51.8 | 51.8 |
| 14:00 | GBP | *** | Services PMI (Jun) | 51.8 | 51.8 |
| 14:00 | GBP | *** | Manufacturing PMI (Jun) | 54.6 | 54.6 |
| 18:00 | USD | *** | Initial Jobless Claims | 227K | 229K |
| 19:30 | USD | *** | Fed Chair Powell Testifies | | |
| 20:00 | USD | ** | Natural Gas Storage | 96B | 92B |
| 20:30 | USD | ** | Crude Oil Inventories | -1.43M | 1.96M |

Source: Investing.com

RESEARCH TEAM

| Name | Designation | Email | Landline No. |
|----------------|--|------------------------------|--------------|
| Amit Jain | Senior Vice President (Head - Retail Research) | amit.jain1@mnclgroup.com | 011-40851320 |
| Jignesh Pandya | Senior Research Analyst | jignesh.pandya@mnclgroup.com | 022-69936404 |
| Arpan Shah | Senior Research Analyst | arpan.shah@mnclgroup.com | 079-66000504 |
| Ronak Bhavsar | Research Analyst | ronak.bhavsar@mnclgroup.com | 079-66000504 |
| Nilesh Shah | Research Associate | nilesh.shah@mnclgroup.com | 022-62021604 |

For Disclaimer & Risk factors please [click here](#)

Monarch Network Capital Ltd. (www.mnclgroup.com)

Office: - 9th Floor, Atlanta Centre, Sonawala Lane, Opp. UdyogBhavan, Goregaon (E), Mumbai 400 063. Tel No.: 022-62021604